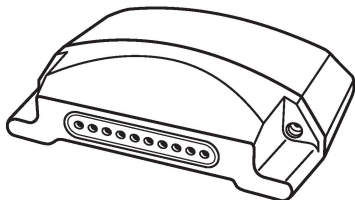


Introduction :

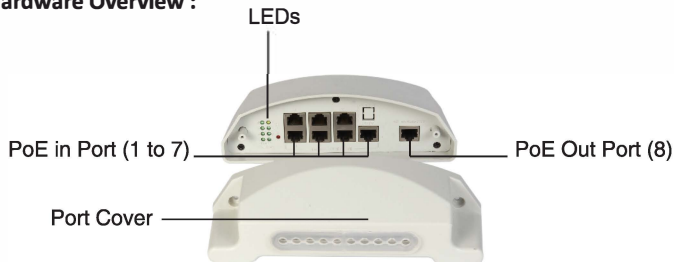
Thank you for purchasing the Remote Powered / Reverse PoE (RPOE) Ethernet Switch. This User Manual is designed to guide you for switch overview and Installation.



Package Contents :

1. Ethernet Switch
2. Metal Straps (1 Nos)
3. Metal Bracket (1 Nos)
4. Self-Tapping Screw (2 Nos)
5. Nut - Bolt (2 Nos)
6. P-Clip (1 Nos)
7. User Manual

Hardware Overview :



LED :

State	Status
Green	ON - Device On Stable
Blue PoE Out Uplink (Port 8)	On - Link Activate Flashing - Data Transmission
Red PoE In Port (1 to 7)	On - Link Activate Flashing - Data Transmission

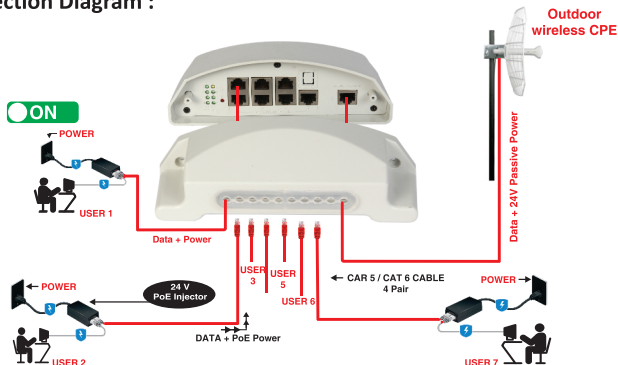
Ports :

- PoE In Ports : Ethernet Port 1 to Port 7 are 10/100 PoE In Ports. Ethernet Port 1 to 7 accepts Passive PoE 24V DC. We recommend supplying power by 24V DC, 1 Amp Passive PoE Injector.
- PoE Out Port : Ethernet Port 8 is 24V DC Passive PoE Out port for supplying power to wireless CPE(Passive 24V DC).

Powering :

- Ethernet Port 1 to 7 accepts Passive PoE 24V DC.
- Ethernet Port 8 is Passive PoE Out for supplying power to wireless CPE (Passive 24V DC).
- Suggested Passive PoE Injector is 24V DC, 1 Amp.
- Power Consumption is 2W for Switch

Connection Diagram :

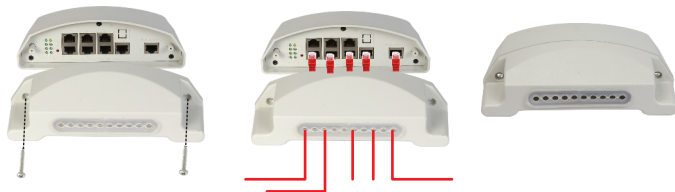


Port Base Isolation :

- Ethernet Data of the Uplink Port 8 can be transferred to all of the Downlink port 1 to port 7 but the internal communication between port 1 to port 7 is not allowed.
- By default - Enabled mode

Mounting :

- Switch can be wall mounted and pole mounted.
- Open the screw from Port Cover to separate Port Cover from Switch using screw driver
- Insert the Ethernet cable through port cover rubber hole
- Connect Ethernet cables to Switch Ethernet Ports
 - Ethernet Cables from PoE Injector to Switch Port 1 to 7 (PoE In Port)
 - Ethernet Cables from Wireless CPE to Switch Port 8 (PoE Out Port)
- Fasten the same screw to close port cover with Switch



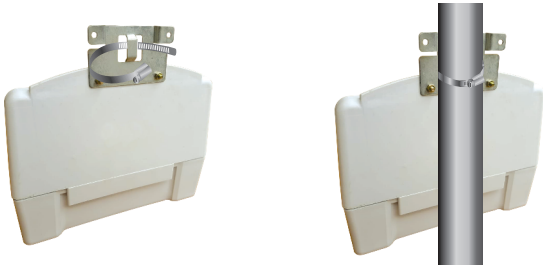
1) Wall Mounting :

- Connect the Metal Bracket through hole located on the top back of Switch by using given Nut - Bolts.
- Secure Self-Tapping Screw thorough Bracket hole on the wall.
- Use p-clip to hold the Ethernet cable to avoid load(pressure) on Switch Ethernet port



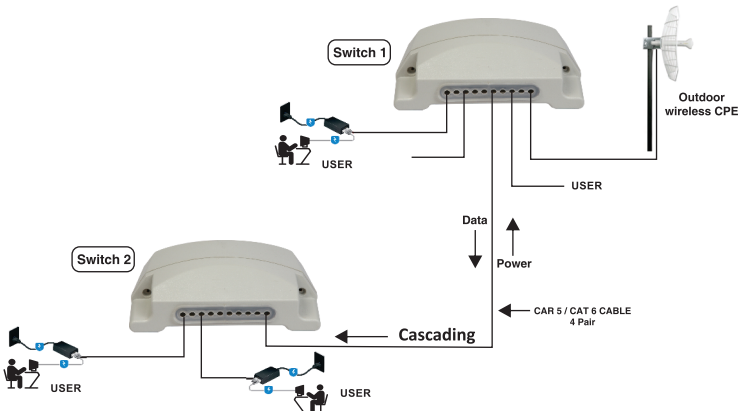
2) Pole Mounting :

- Open a Metal Strap and feed it through a slot of the Metal Bracket.
- Wrap the Metal Straps around the pole. Use a screwdriver to turn the screws clockwise and securely fasten the straps to the pole.



Cascading :

- Switches can be Cascaded for more User
- With Cascading, even if one customer switches on power then power will be on all upstream switches



Copyright and Warranty Information :

User Manual COPYRIGHT ©2019 ALL RIGHTS RESERVED. Any and all information, including, among others, wordings, pictures, graphs are the properties of Infonet Technologies or its subsidiaries (hereinafter referred to be "Infonet"). This user manual (hereinafter referred to be "the Manual") cannot be reproduced, changed, translated, or distributed, partially or wholly, by any means, without the prior written permission of Infonet. Unless otherwise stipulated, Infonet does not make any warranties, guarantees or representations, express or implied, regarding to the Manual. This Manual is applicable to Remote Powered/Reverse PoE (RPOE) Ethernet Switch. The Manual includes instructions for using and managing the product. Pictures, charts, images and all other information hereinafter are for description and explanation only. The manufacturer has made every effort to ensure the accuracy of the contents of this document, however, it is possible that it may contain technical inaccuracies, typographical or other errors. No liability is assumed for any inaccuracy found in this publication, nor for direct or indirect, incidental, consequential or other damages that may result from such an inaccuracy, including, but not limited to, loss of data or profits. The information contained in the Manual is subject to change, without notice, due to any other reasons. Please use this user manual under the guidance of professionals. All trademarks and registered trademarks appearing in this document are the property of their respective holders.

Hardware Warranty : Infonet Technologies warrants Remote Powered/Reverse PoE (RPOE) Ethernet Switch for the term of twelve months from the shipping date to be free of defects in materials and workmanship under normal use and service, except in case of damage caused by mechanical, electrical, or other accidental or intended damages caused by improper use or due to wind, rain, lightning, fire or other acts of nature.

To return defective devices to Infonet Technologies, you must follow the instruction below-

- 1) If you have purchased your product from a Infonet Technologies Reseller, please contact the Reseller company regarding all warranty and repair issues.
- 2) If you have purchased your product from Infonet Technologies please contact Infonet Technologies directly to know RMA instructions.
- 3) The defective devices and repaired devices must be delivered to and picked up From Infonet Technologies service station in India at the customer's cost.
- 4) Infonet Technologies does not offer repairs for products that are not covered by warranty.
- 5) Out of warranty devices and devices not covered by warranty sent to Infonet Technologies will be returned to the sender at sender's cost. If the sender has not organized return of such rejected devices within twelve month from the day of arrival, Infonet Technologies has the right to discard them.

Legal Disclaimer :

TO THE MAXIMUM EXTENT PERMITTED BY APPLICABLE LAW, THE PRODUCT DESCRIBED, WITH ITS HARDWARE IS PROVIDED "AS IS", WITH ALL FAULTS AND ERRORS, AND INFONET TECHNOLOGIES MAKES NO WARRANTIES, EXPRESS OR IMPLIED, INCLUDING WITHOUT LIMITATION, MERCHANTABILITY, SATISFACTORY QUALITY, FITNESS FOR A PARTICULAR PURPOSE, AND NON-INFRINGEMENT OF THIRD PARTY. IN NO EVENT WILL INFONET TECHNOLOGIES, ITS DIRECTORS, OFFICERS, EMPLOYEES, OR AGENTS BE LIABLE TO YOU FOR ANY SPECIAL, CONSEQUENTIAL, INCIDENTAL, OR INDIRECT DAMAGES, INCLUDING, AMONG OTHERS, DAMAGES FOR LOSS OF BUSINESS PROFITS, BUSINESS INTERRUPTION, OR LOSS OF DATA OR DOCUMENTATION, IN CONNECTION WITH THE USE OF THIS PRODUCT, EVEN IF INFONET TECHNOLOGIES HAS BEEN ADVISED OF THE POSSIBILITY OF SUCH DAMAGES. REGARDING TO THE PRODUCT WITH INTERNET ACCESS, THE USE OF PRODUCT SHALL BE WHOLLY AT YOUR OWN RISKS. INFONET TECHNOLOGIES SHALL NOT TAKE ANY RESPONSIBILITIES FOR ABNORMAL OPERATION, PRIVACY LEAKAGE OR OTHER DAMAGES RESULTING FROM CYBER ATTACK, HACKER ATTACK, VIRUS INSPECTION, OR OTHER

INTERNET SECURITY RISKS; HOWEVER, INFONET TECHNOLOGIES WILL PROVIDE TIMELY TECHNICAL SUPPORT IF REQUIRED. LAWS VARY BY JURISDICTION. PLEASE CHECK ALL RELEVANT LAWS IN YOUR JURISDICTION BEFORE USING THIS PRODUCT IN ORDER TO ENSURE THAT YOUR USE CONFORMS THE APPLICABLE LAW. IN FON ET TECHNOLOGIES SHALL NOT BE LIABLE IN THE EVENT THAT THIS PRODUCT IS USED WITH ILLEGITIMATE PURPOSES. IN THE EVENT OF ANY CONFLICTS BETWEEN THIS MANUAL AND THE APPLICABLE LAW, THE LATER PREVAILS.

EU Declaration of Conformity :

Object of Declaration: Remote Powered/Reverse PoE (RPoE) Ethernet Switch

The Object of the declaration describe above is in conformity with the relevant European Union harmonisation legislation

Applied Council Directives:

Low voltage directive 2014/35/EU

Electromagnetic compatibility Directive 2014/30/EU

Restriction of Hazardous Substance Directive 2011/65/EU

Waste Electrical and Electronic Equipment Directive 2012/19/EU

Standard to which conformity is declared :

EN 60950-1:2006+A2:2013- Information Technology Equipment-Safety –General Requirement.

EN 55032:2012 -Electromagnetic Compatibility- Emission Requirement

EN 55024-2014-Information Technology Equipment Immunity Requirement-Limits and Method of Measurement

EN 50581:2012 Technical documentation for the assessment of the electrical and electronic products which respect to the restriction of the hazardous substances

EN 50419-2006-Marking of Electrical and Electronics Equipment in accordance with Article 11(2) of the Directive (WEEE)



INFONET TECHNOLOGIES

Ahmedabad-380058, Gujarat, India

Mo : +91 9687688966 | Email : switch@netstar.in | Web : www.netstar.in